

Creekwalk Community Advisory Group Meeting - Minutes
Southwest Community Center
February 2, 2016 5:00 - 6:30 PM

14 Attendees; Sign in Sheet is attached

Topics

- Brief Introductions were made.
- Update on preliminary design
 - The Project Submittal Package is currently being drafted; it includes the cultural resources survey and will be submitted to NYSDOT in February. No historic buildings were identified along the route.
 - The Draft Design report (DDR) is being drafted. The DDR will present a preferred route alternative based on public input, feasibility and budget considerations. The DDR also will include a review of the environmental assessment.
- Draft Project Schedule
 - The draft schedule attached was reviewed.
- Update on meetings with property owners along route(s)
 - Certified letters were sent by the City in December 2015 to owners with parcels that might be affected by the CW2 route
 - About half of these owners have been directly contacted by the City to date; the CW route behind the properties on Midland Ave at the top of the creekbank is supported by owners contacted so far. No opposition has been presented to date.
 - City Engineering will continue to contact owners along the route.
 - The question was raised about what would happen to parcels where a piece is acquired by the State/City for the project. Would taxes increase? The City Assessment Dept. said that the divided parcels would immediately get reassessed using the standard assessment methods. Local owners are looking for reassurance from the City that assessment rates will not increase for parcels divided for the project. R. Houck and O. Kerney to talk with Assessment Dept. and City on this issue.

- Review route alternatives for Marginal/Hovey (west-side route) vs. MLK West (east-side route)
 - Participants reviewed the route and cost options for the east side of creek vs. west side of creek between Midland Ave and Rich St.
 - Both options are feasible; the east-side route is much simpler and entails construction of a 13-foot wide path; the path could be entirely new at the top of the bank or utilize part of the existing sidewalk through the greenspace. Rough cost was estimated at \$200,000.
 - The West side route along Marginal/Hovey Streets can get closer to the creek by coming down from Midland Ave to the creek shelf, running between the creek and stone wall, and then coming back up to Hovey Street. A steel sheetpile wall would be needed for bank stability. A section of Hovey Street between South Ave. and Chester St. would have to be made into one-way traffic. Cost was estimated at \$900,000 for this stretch. Using a block wall instead of a steel sheetpile wall for aesthetic improvements would be more costly.
 - Safety along Marginal/Hovey Street was brought up – the existing brush and trees need clearing for vehicle and pedestrian safety. Clearing needs to be maintained.
 - It was stressed that whichever side of the creek was used for the Creekwalk, that the other side along Marginal/Hovey should not be ignored. The whole creek corridor would need improvement to make the project successful and safe.
 - The Price Rite supermarket will be built soon between South and Chester and will increase traffic in the area. Will a one-way Hovey St be sufficient for the increased vehicle traffic?
 - Glen Lewis of the Parks Dept. summarized that this and other projects along the Creek focus on creating viewsheds of the creek; however, clearing trees can lead to increased growth of vegetation. A clearing plan needs to be carefully thought out, and continual maintenance is needed. Parts of the Creekwalk Phase 1 have not been cut back since construction.
 - The City (O. Kerney) and DPW to look into what can be done now at this time for maintenance/clearing along Margin and Hovey streets.
 - Use of benches along the trail was discouraged by the group; non-sleeping benches and seating can be considered.
 - The existing chain link fence will be removed and replaced where possible. Fencing type will be used as needed for safety, but will be more aesthetically pleasing.
- Upcoming public meeting/hearing
 - The City will host a formal public hearing for the project; May 2016 is targeted. The Draft Design Report must be made public at least 45 days before the hearing. The preferred route alternative will be presented at the hearing and in the DDR; public comment can be provided at the hearing and will become part of the formal record.
 - Notice will be provided when the draft design report is available and the public hearing scheduled.

- SUNY-ESF Design Course/Creekwalk Phase 1 Public Survey
 - SUNY-ESF design course to develop design concepts for the Kirk Park west area including water access feature.
 - Design Team member Lia Dombroski attended asked for input for the Creekwalk in this area. She indicated that various seating options are available.
 - Concepts to be developed by April/May 2016; targeting presenting the concepts as an exhibit at the public hearing.

- Other Project concerns?

Project labor

- USDOT has a pilot program in place for local hire on federal projects. However, the Creekwalk 2 project does not meet the pilot project timeline. R. Sawczak of NYSDOT to investigate if there will be another round of this program and opportunities at the NY state level for local hire.

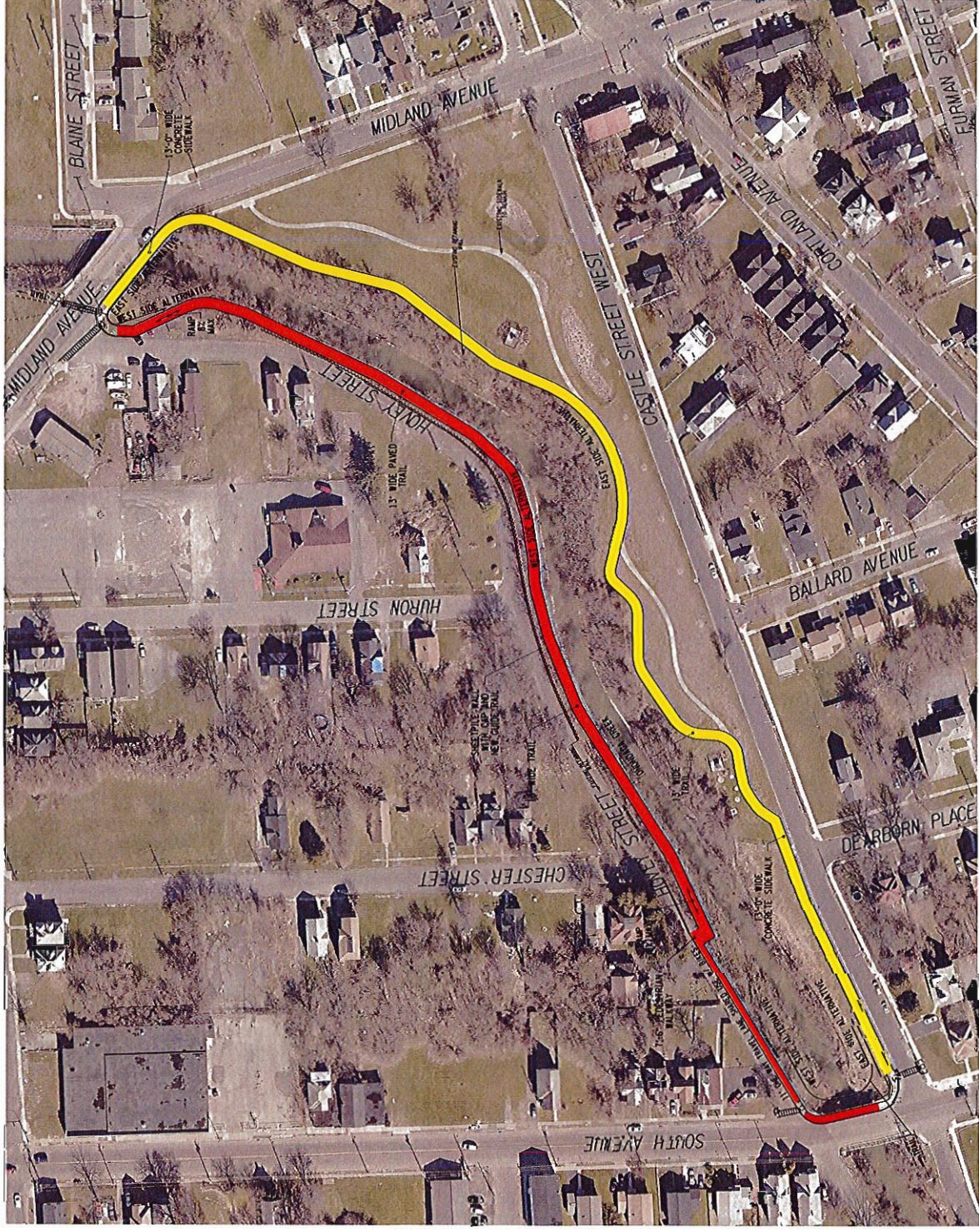
- Onondaga Earth Corps could provide labor for landscaping and long-term maintenance.

- Training programs would need to be utilized; Job classifications on the Creekwalk 1 project were requested by Aggie Lane of the advisory group; listing to be provided.

- City will set an up a meeting in February focused on local hire provisions – City, NYSDOT, Advisory group, C&S, Onondaga Earth Corp, UJTF to be invited.

Creekwalk Phase 2 Project - PIN 3755.14
Draft Project Schedule (as of Feb. 2016 - subject to change)

Draft Design Report (1 st draft - shell) DOT Review	Feb 2016
Submit Project Submittal Package (Cultural Resources); DOT Review	Mar 2016
Draft Design Report (2nd draft) (45 days min before public hearing)	Mar 2016
Public Hearing	May 2016
Project Submittal Package Approval (anticipated)	June 2016
Final Design Report Submittal	End July 2016
Final Design Report Approval (anticipated)	End August 2016
NYS DOT Obligate ROW, Acquisition and Final Design Funds (anticipated)	October 2016
ROW Acquisition (up to 18 mos.)	October 2016 – April 2018
Advanced Detailed Plan Submittal	June 2018
Plans, Specifications & Engineering Estimate	September 2018
Bidding and Contracting	Oct – Dec 2018
Construction Start	Jan 2019
Construction End	Nov 2020



C&S COMPANIES
 C&S Engineers, Inc.
 1000 North Salina Street
 Syracuse, New York 13212
 Phone: 315-486-0800
 Fax: 315-486-0801
 www.c2cs.com

PRELIMINARY
 CONSTRUCTION



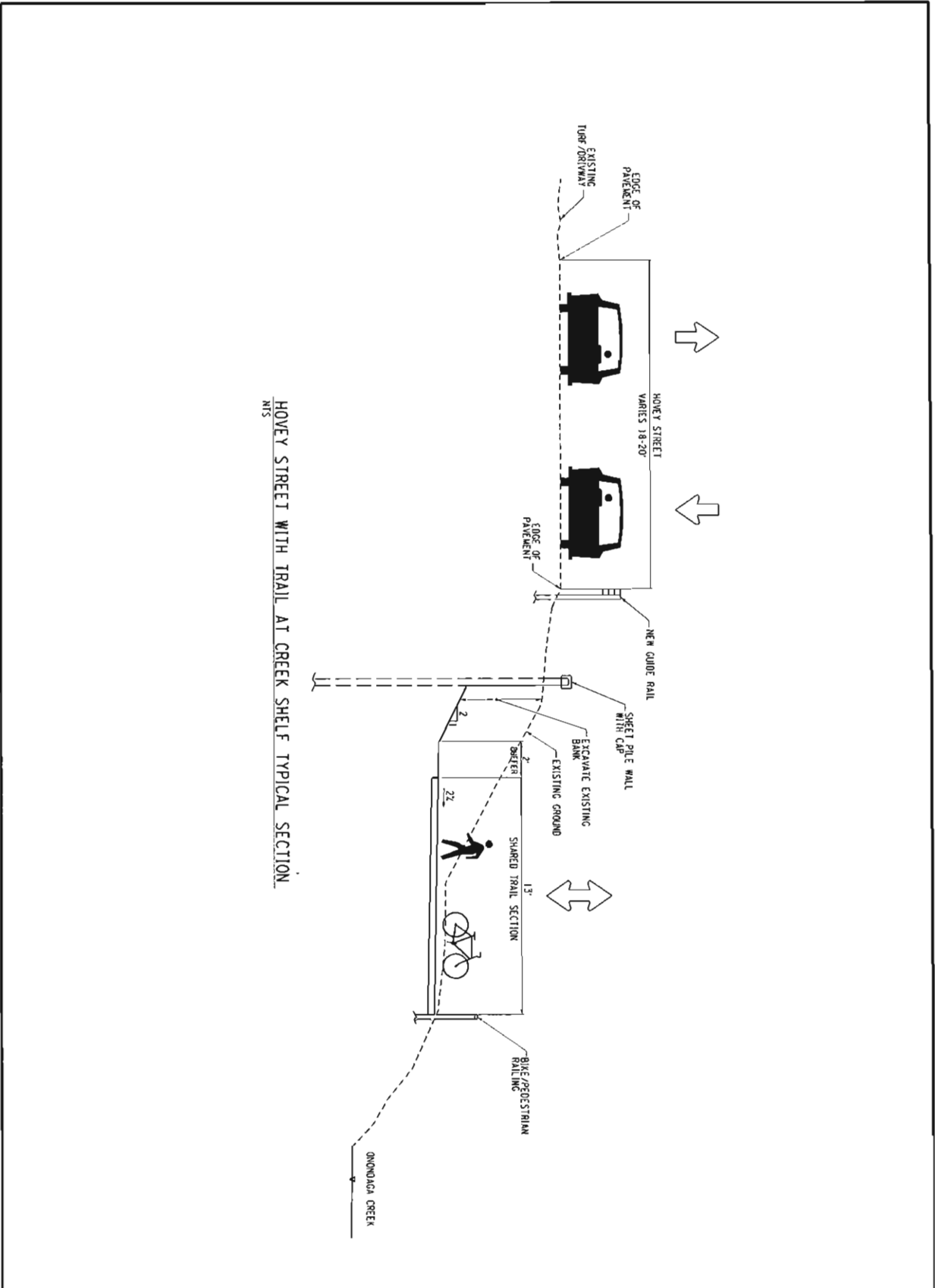
ONONDAGA CREEKWALK PHASE II
 CITY OF SYRACUSE, N.Y.
 PIN 3755.14

NO.	DATE	DESCRIPTION
1	11/06/2011	ISSUANCE
2	11/06/2011	REVISIONS
3	11/06/2011	REVISIONS
4	11/06/2011	REVISIONS
5	11/06/2011	REVISIONS
6	11/06/2011	REVISIONS
7	11/06/2011	REVISIONS
8	11/06/2011	REVISIONS
9	11/06/2011	REVISIONS
10	11/06/2011	REVISIONS
11	11/06/2011	REVISIONS
12	11/06/2011	REVISIONS
13	11/06/2011	REVISIONS
14	11/06/2011	REVISIONS
15	11/06/2011	REVISIONS
16	11/06/2011	REVISIONS
17	11/06/2011	REVISIONS
18	11/06/2011	REVISIONS
19	11/06/2011	REVISIONS
20	11/06/2011	REVISIONS
21	11/06/2011	REVISIONS
22	11/06/2011	REVISIONS
23	11/06/2011	REVISIONS
24	11/06/2011	REVISIONS
25	11/06/2011	REVISIONS
26	11/06/2011	REVISIONS
27	11/06/2011	REVISIONS
28	11/06/2011	REVISIONS
29	11/06/2011	REVISIONS
30	11/06/2011	REVISIONS
31	11/06/2011	REVISIONS
32	11/06/2011	REVISIONS
33	11/06/2011	REVISIONS
34	11/06/2011	REVISIONS
35	11/06/2011	REVISIONS
36	11/06/2011	REVISIONS
37	11/06/2011	REVISIONS
38	11/06/2011	REVISIONS
39	11/06/2011	REVISIONS
40	11/06/2011	REVISIONS
41	11/06/2011	REVISIONS
42	11/06/2011	REVISIONS
43	11/06/2011	REVISIONS
44	11/06/2011	REVISIONS
45	11/06/2011	REVISIONS
46	11/06/2011	REVISIONS
47	11/06/2011	REVISIONS
48	11/06/2011	REVISIONS
49	11/06/2011	REVISIONS
50	11/06/2011	REVISIONS

HOVEY STREET ALTERNATIVES

PLN-01

Copyright ©



HOVEY STREET WITH TRAIL AT CREEK SHELF TYPICAL SECTION
 N15

PROJECT NO.	113A0001
DATE	DECEMBER 2003
DRAWN BY	LVK
CHECKED BY	DOE
SCALE	AS SHOWN
DESIGNED BY	DOE
DATE	DECEMBER 2003
BY	DOE
DATE	DECEMBER 2003
BY	DOE
DATE	DECEMBER 2003
BY	DOE
DATE	DECEMBER 2003
BY	DOE

ONONDAGA
 CREEK WALK PHASE II
 CITY OF SYRACUSE, N.Y.
 PIN 3755.14



PRELIMINARY
 NOT FOR
 CONSTRUCTION

C&S COMPANIES

C&S Engineers, Inc.
 499 Col. Edwin Colver Blvd.
 Syracuse, NY 13204-3600
 Phone: 315-462-4000
 Fax: 315-462-4007
 www.ccsny.com

TYP-01

Creekwalk Community Advisory group Meeting Sign-In Sheet
February 2, 2016 Southwest Community Center

Name	Organization	Email Address
RUSSEN HOUCK	CITY OF SYRACUSE ENGINEER	rhouck@syr.gov.net
Rick Sawczak	NYSDOT	Richard.Sawczak@dot.ny.gov
DOVA STANSBURY	C/S COMPANIES	DSTANSBURY@CSCOS.COM
Andrew Maxwell	City of Syracuse	amaxwell@syr.gov.net
CHARLES STANTON	C/S COMPANIES	CSTANTON@CSCOS.COM
Mercedes Jones	Homeowner	sksbjame@yahoo.com
Richard Shoff	SPD	
Owen Kerney	City Planning	
Jaime Steers	+11	

